

DOME VALVE

The Reliable & Original Bulk Materials Handling Valve

Macawber Beekay's Dome valve is simple in concept but revolutionary in performance. When open, it allows unobstructed flow path to material ensuring prolonged life, making it most reliable and least maintenance prone. An inflatable pneumatic sealing ensures airtight seal in closed position which provides dust free environment and saves energy.

Dome cuts through the moving or static column of material ensuring proper closing. A mere quarter turn is sufficient to move the dome valve from "closed" to "open" position.

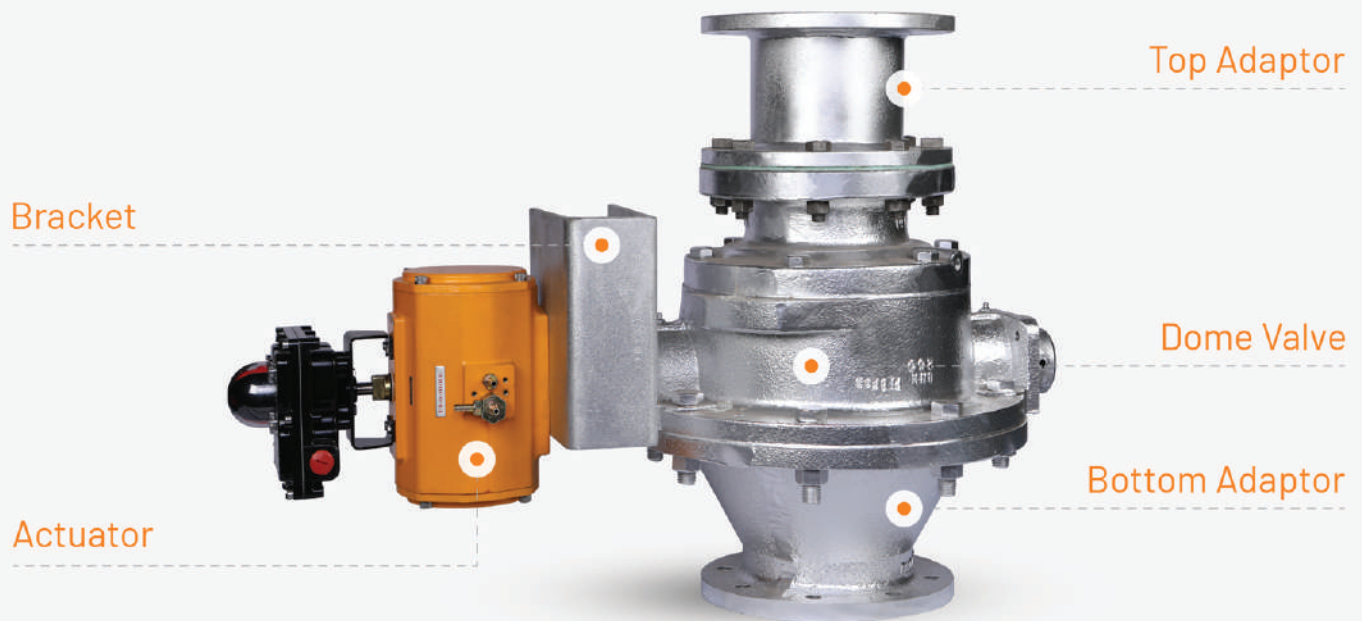
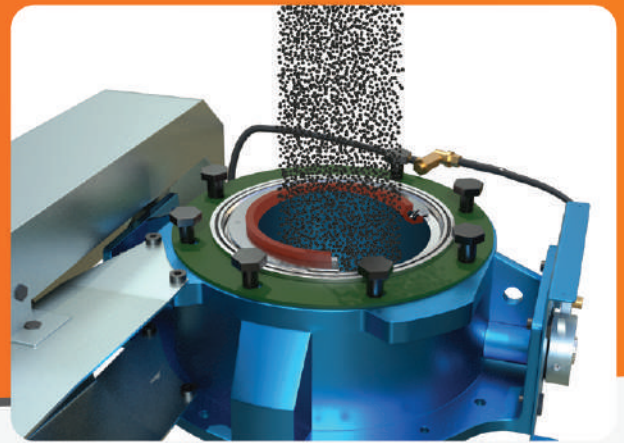
Unique features make the Dome Valve inherently more efficient, highly reliable, and long lasting as compared to other types of valves like butterfly, cone, plate, flap etc.

Dome valve's capability to open & close with tight pressure seal works efficiently in harsh environments for abrasive materials. The valve finds its application in Power Generation, Cement, Iron, Mineral, Ferrous / Non-ferrous, Chemical etc industries for bulk material handling. Options of BULK-HEAD or IN-LINE valves are available to suit a specific requirement. Dome can be made available in Cast Iron / Alloy Cast Iron / Stainless Steel to meet application demand. Dome valves can be actuated using either pneumatic / hydraulic cylinder or vane actuator.

Dome valves are manufactured after going through stringent quality checks at Macawber Beekay's state of art manufacturing units using CNC machines with highest accuracy levels.

Core Benefits

- ✓ Full bore unobstructed material flow
- ✓ Simple, Fully proven design
- ✓ Can cut through moving or static column of material
- ✓ Wide range of valve sizes: 50mm to 500mm
- ✓ Forms pressure tight seal when closed



Key Features

- ✓ Inflatable pressure tight seal
- ✓ Simple proven design
- ✓ Low maintenance
- ✓ Moving or static column cut-off
- ✓ Valve sizes 50mm - 500mm bore
- ✓ 10,000 derivatives in use worldwide
- ✓ 1,000,000 cycles between major overhauls with most materials

Materials Handled

- ✓ Ash
- ✓ Ores
- ✓ Minerals
- ✓ Sand
- ✓ Detergents
- ✓ Chemicals
- ✓ Powders
- ✓ Granules
- ✓ Toxic
- ✓ Hazardous
- ✓ Cohesive



Dome Valve Is A Completely **Leak Proof System**
Ensuring **No Environmental Pollution**



Macawber Beekay Pvt Ltd.
C-450, Sector-10, Noida | UP-201301 | India

Tel: +91 120 4507700
Web: www.mbl.in
Email: info@mbl.in

