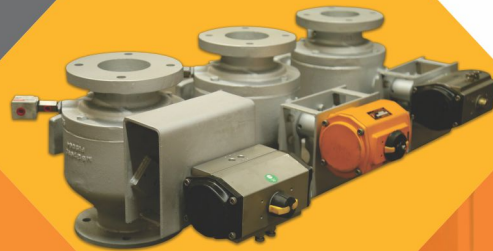




MACAWBER

**WHY USE
MACAWBER BEEKAY
SPARES?**



About Macawber Beekay

Macawber Beekay, established in 1986, was the first company to bring technology of Dense Phase Pneumatic Conveying for transfer of bulk materials, especially Dry Fly Ash to India. Macawber Beekay is part of well-known BSBK Group, which started its activities way back in 1918 in the field of civil engineering & construction and later gradually diversified into other areas.

The headquarter is in Noida (Uttar Pradesh), near New Delhi, capital of the country. Manufacturing unit is in Keshwana (Rajasthan), fully equipped with the state of art of manufacturing, painting and testing facilities.



Macawber Beekay Spare Parts

Since Macawber Beekay is the OEM, we take utmost care in terms of accuracy, correctness in supplying Spare Parts while maintaining extremely high precision and quality in manufacturing.

At our manufacturing plant we keep adequate inventory of all essential and fast moving Spare Parts to meet urgent requirements of our Customers.

Each Spare Parts is given a unique Part No. for easy correlation & identification for quick search of a Spare Part. All Plant users are given a comprehensive list of Spare Part along with unique Part Nos. thereof. Customer need to generate enquiries of Spare Parts mentioning the unique Spare Part Number. Spare Part can be ordered online also or offline enquiries can be mailed to spares@mbl.in



It is important to have good inventory of spare parts for the systems supplied by Macawber Beekay. The spare parts should be interchangeable with originally supplied equipment. Macawber Beekay strongly recommends the genuine spare parts for the following reasons:

- Our sourcing of raw materials is from reputed makes, each component undergo stringent quality checks.
- We have world class manufacturing & testing facilities. The core components (e.g. Dome Valve, etc.) are manufactured on CNC Machines.
- The final quality checks are well defined for each item.



We supply same quality of spares for domestic & overseas markets.

- Consistent quality is maintained and hence there is always a difference between locally sourced spares and original spares from Macawber Beekay. Low cost alternatives may fail early and cause safety problems.
- We keep adequate inventory in our works to meet express delivery in case of emergency requirement of spares.
- Plant operators get better life of the equipment using original spare parts. Hence minimal maintenance, less down time of the plants and consistent guaranteed performance of the plants.
- Plants operators should do the cost-benefit analysis before buying local spares.

Why use Macawber Beekay Spares?

There are some distinct and widespread advantages that our customers can benefit from by using genuine and high-quality spares from Macawber Beekay. Our USP is in our technique & machinery used for manufacturing these spares with extreme high precision and quality, which cannot be

matched by any other local or cheap after market spare suppliers claiming to supply genuine spare part for our products.

For example, a few state-of-the-art automated machinery that give Macawber Beekay a competitive edge over other suppliers.

Automatic Plate Forming Machine

Automatic Plate Forming Machine for conical & Cylindrical Shapes is equipped with an analogue dial indicator to read the position of side bending rolls, its end is equipped with a conical and cylindrical bushing, help to roll the plates at every possible angle with high degree of accuracy.



CNC Machining Centre

CNC Machine Centre (Turning / Milling / Drilling / Boring / VTL / SPM / Double Turret Machine) is used as a single station with different manner including turning, Milling, Drilling & Boring that includes an automatic tool changer and a table that clamp the workpiece in place, the orientation of the spindle is the most fundamental defining characteristic of CNC machining centre.

Robotic Welding Arm Machine

Robotic Welding Arm by deploying a robotic welder Macawber Beekay is able to achieve a superior quality of weld by ensuring the correct welding angle, speed, and distance with repeatability of accuracy of (+0.04mm). Ensuring that every single welding joint is consistently produced to the highest quality, also allowing for faster completion and delivery of products whilst ensuring consistent quality.



CNC Plasma Cutting Machine

The shapes resulting from CNC plasma cutting are very smooth and precise and include sharp corners, intricate curves and inside cuts. The plasma cutter is equipped with gears that ensure that the cutting is accurate without deviating from the measurements specified. Also, the cutting speeds of the CNC plasma cutters are quite high, and the cutter can operate up to speeds of around 500 inches per minute. Plate thickness upto 200mm CNC pipe cutting arrangement also there is various shapes of cutting upto 500mm diameter.



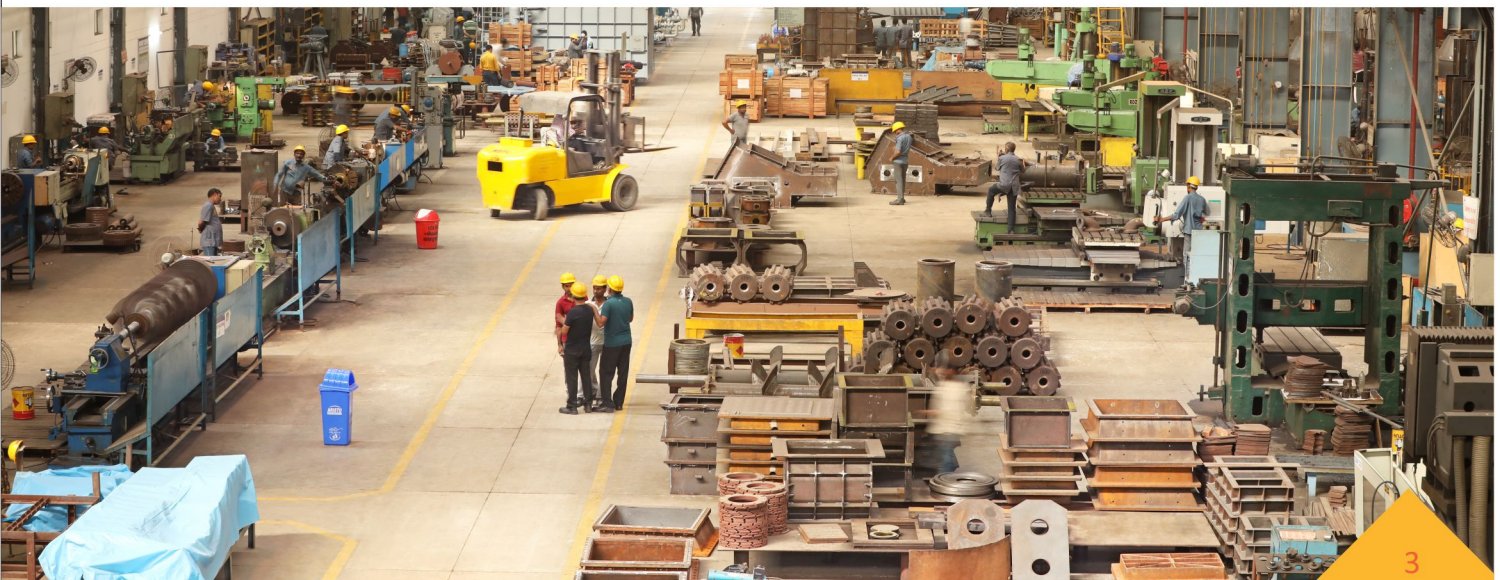
Shearing Machine is a multipurpose device used in the cutting of alloys and other sheet metal. Shearing machines use a scissor-like, angular shear action to cut metal into sheets or strips. Shear action moves progressively from one side of the material to the other. Both rake and clearance are a function of the type and thickness of the material to be cut. A gauging system with stops is used to produce specific work piece finish sizes.

Slotting Machine is a reciprocating type of machine tool similar to a shaper or a planer machine. It may be considered as a vertical shaper. The main difference between a slotter and a shaper is the direction of the cutting action. The slotting machine operates in a manner similar to the shaper. However, the cutting tool moves vertically direction rather than in a horizontal direction. The workpiece is held stationary. The slotting machine has a vertical ram and a hand or power operated rotary table.



Macawber Beekay has a dedicated department-Single point window supporting & helping our customers-right from generating quotation to supply chain management of spares. This department is responsible for maintaining the data base for each individual project and offer a stock top-up service that ensures customers always have the right level of

stock level for regularly used parts. Prompt After-Sales-Service and quick response to the customers is our prime moto. Trust Macawber Beekay for all your spare parts needs. Please send your enquiries for spare parts at spares@mbl.in for our prompt response.



A Few Spares...

• Non Return Valve ▾



• Blow Valve ▾



• Dome ▾



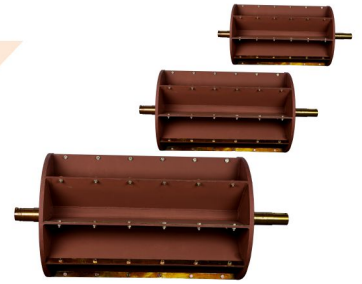
• Striker Arm ▾



• Torque Arm ▾



• RVF Rotor ▾



• Idler ▾



• Diffuser ▾



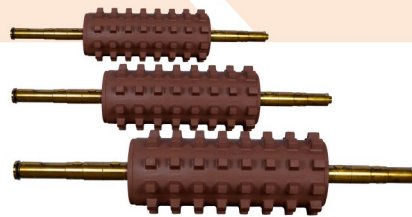
• Pneumatic Fittings ▾



• Air Slide ▾



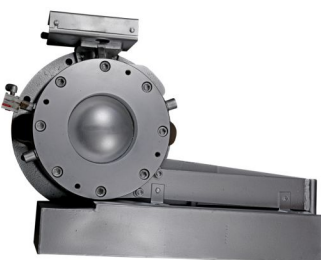
• Clinker Grinder
Roll with Shaft ▾



• Top Plate ▾



• Dome Valve Assembly ▾



• Roller ▾



• Shaft ▾



DOME ASSEMBLY



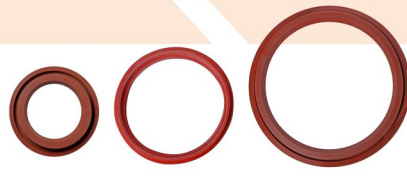
S.No. DESCRIPTION

- 1 Top Adapter
- 2 Top Plate
- 3 Insert Ring
- 4 Inflatable Seal
- 5 Seal Retaining Ring
- 6 Gasket
- 7 Valve Body
- 8 Pneumatic Cylinder / Actuator
- 9 Dome
- 10 Limit Switch
- 11 Torque Arm
- 12 Bottom Adapter

• Inflatable seal (Neoprene) ▾



• Inflatable seal (Silicon) ▾



• Insert Ring ▾



• Ash Conditioner Shaft with Paddle Holders ▾



• ACI Bend ▾



• Jet Pump ▾





Macawber Beekay Pvt. Ltd.

Registered Office
Beekay House

C-450-451 | Sector-10 | Noida: 201301

Utter Pradesh | tel: +91-120-4507700

email: spares@mbi.in

www.mbi.in